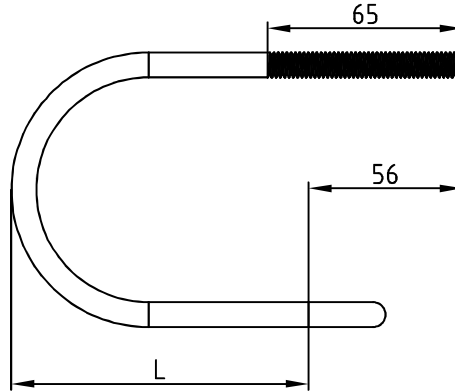


# SWA BRACE PIPE ATTACHMENT



- Function:** Support pipe to prevent sway or seismic disturbance. Provides a simple lateral connection that connects the support pipe members together as a complete assembly.
- Material:** Carbon Steel
- Finish:** Electro-galvanized
- Approvals:** Underwriters' Laboratories Listed in the U.S. (UL), Canada (CUL), for use with standard steel pipe sizes 1" to 8".
- Maximum Temperature:** 343°C (650°F)
- Ordering:** Specify Size

Item	Size (inches)	L (mm)	Support Pipe	Assembly longitudinal and transverse loads					
				Minimum Load (lbs)	Minimum Load (kg)	Minimum Load (N)	Maximum Load (lbs)	Maximum Load (kg)	Maximum Load (N)
GSUS	1"	51	1" Pipe	680	306	3020	1494	673	6650
GSUS	1-1/4"	59	1" Pipe	680	306	3020	1494	673	6650
GSUS	1-1.2"	65	1" Pipe	680	306	3020	1494	673	6650
GSUS	2"	77.5	1" Pipe	680	306	3020	1494	673	6650
GSUS	2-1/2"	93.5	1" Pipe	680	306	3020	1494	673	6650
GSUS	3"	105.5	1" Pipe	680	306	3020	1494	673	6650
GSUS	4"	130.5	1" Pipe	680	306	3020	1494	673	6650
GSUS	5"	156	1" Pipe	680	306	3020	1494	673	6650
GSUS	6"	185	1" Pipe	680	306	3020	1494	673	6650
GSUS	8"	237	1" Pipe	680	306	3020	1494	673	6650