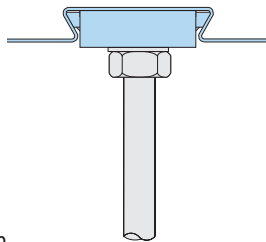
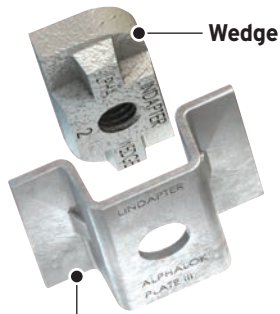
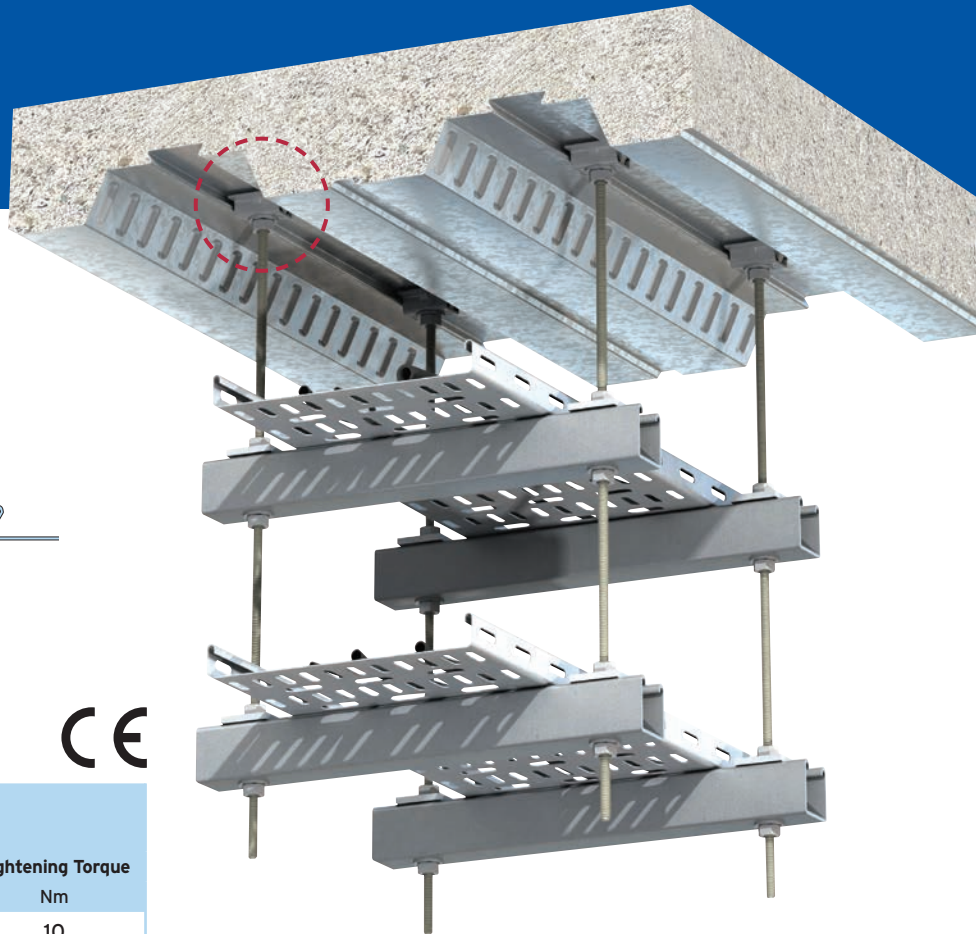


Type AW - Alphawedge

Designed for Ribdeck E60 profiles manufactured by Richard Lees Decking (owned by William Hare).



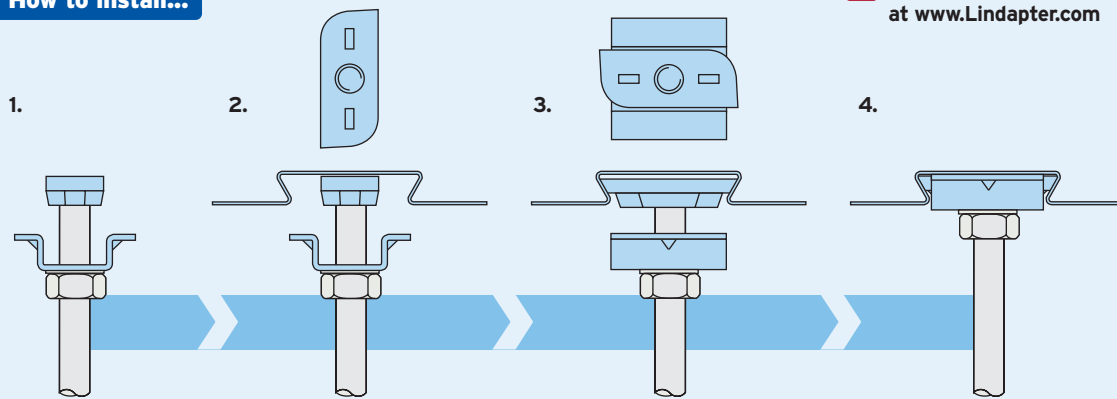
Locking Plate: Pre-galvanised strip
Wedge: Malleable iron, zinc plated.

| Product Code | Rod min 4.6 | Safe Working Load (FOS 3:1) | |
|--------------|-------------|-----------------------------|-------------------------|
| | | Tensile / 1 Rod kN | Tightening Torque Nm |
| AW06 | M6 | 1.0 | 10 |
| AW08 | M8 | 1.0 | 10 |
| AW10 | M10 | 1.0 | 10 |

➤ For fire ratings please refer to www.Lindapter.com

How to install...

▶ Watch the installation video at www.Lindapter.com



- 1) Pre-assemble the Locking Plate and wedge (flat surface up) onto the threaded rod.
- 2) Insert the wedge into the re-entrant channel of the decking and rotate 90°.
- 3) Slide the plate up the threaded rod, over the wedge, to lock it in position into the channel.
- 4) Tighten a nut beneath the plate and washer to hold the assembly in position.

- Install the decking fixings after the concrete has been poured and has reached full strength.
- If the decking profile is deformed or distorted, do not install the fixing. If in doubt, contact the Technical Support team for advice.
- Although the Type AW is similar in appearance to Type AMD (page 69), it should NOT be used in profiles manufactured by AMDECK®.

For Characteristic Resistances when designing a connection to Eurocode 3, refer to DoP No.016 on Lindapter's website or request the DoP Brochure >>

