



EASYFLEX

ENGINEERING INDIA



BUILDING & CONSTRUCTION

MECHANICAL
ELECTRICAL
PLUMBING
FIRE FIGHTING

INTERACTION
with People and Structure

AIR BORNE
STRUCTURE BORNE
DUCT BORNE

KANWAL INDUSTRIAL CORPORATION

Operating under the Brand Easyflex, is invested in design and manufacturing of

Flexible Piping Components

Vibration & Noise Control Technology

And Technology in

Pipe Thermal Stress Analysis

Shock Isolation Design

Seismic Design & Engineering



Easyflex



PRODUCT SELECTION

MANUFACTURING & TESTING

QUALITY ASSURANCE

MECHANICAL & HVAC

Capital Equipments, Piping and Ducting - related to Air Conditioning Systems experience changes in Pressure and Temperature.

Easyflex engineers multiple product lines to ensure Safety, efficient operations of overall systems and a benchmark of quality standards for our customers and the People impacted by development in the world at large.

CHILLERS

PUMPS

AIR HANDLING

VRV

PIPING & DUCTING

VIBRATION ELIMINATION

EXPANSION JOINTS

SEISMIC ISOLATION

CHILLERS

Expansion Joints for Chillers compensate for movements occurring in the associated piping systems due to **Thermal Expansion and Contraction** and absorb accompanying noise, vibration and water hammer.

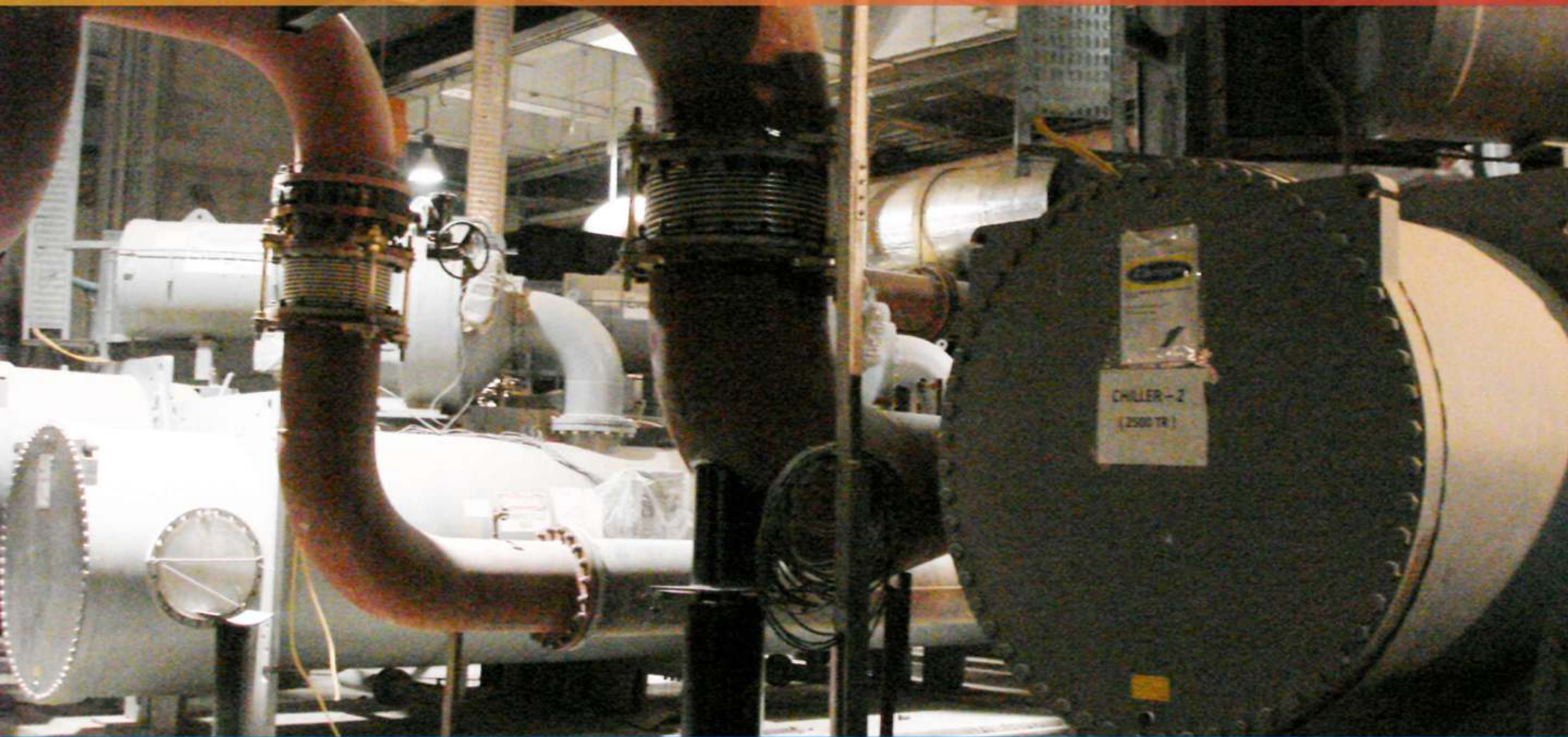
Expansion Joints

The Selection and Design process of Easyflex Expansion joints are in compliance with the **Expansion Joints Manufacturer's Association (EJMA)** and **Fluid Sealing Association (FSA)**.



FLEXIBLE CONNECTIONS

RUBBER | PN10 / PN16 | FLOATING FLANGE BELLOWS FOR PN20 | EPDM / NEOPRENE | CONTROL UNITS



FLEXIBLE CONNECTIONS

METALLIC | PN10/16/20/25/40 | SINGLE PLY / MULTI PLY | DESIGN AS PER EJMA | IN-HOUSE TESTING

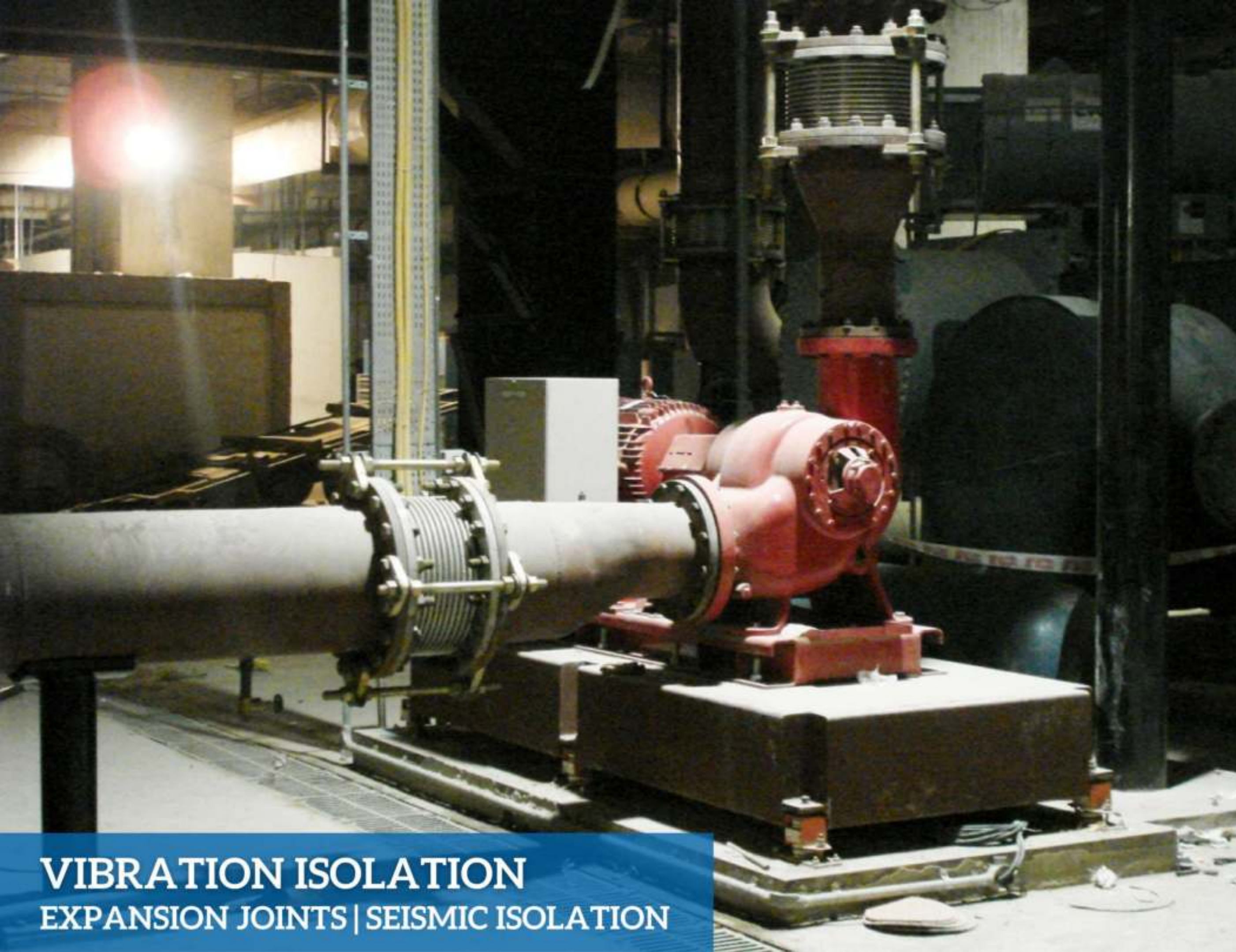


VIBRATION ISOLATION
FLOOR MOUNTED | RESTRAINED SPRING ISOLATOR | 9 SPRING MODEL | 10 TON POINT LOAD



**VIBRATION ISOLATION
FLOOR MOUNTED | CASED SPRING MOUNT**





PUMPS

Metallic Flexible Connectors installed with Piping at the suction and discharge and Pump mounted on Easyflex Inertia Base with Seismic Isolators

Metallic Bellows

Rubber Bellows

Pump Connectors

Inertia Base Frame

Vibration Isolators

Pipe Supports

VIBRATION ISOLATION
EXPANSION JOINTS | SEISMIC ISOLATION



DOUBLE ARCH RUBBER BELLOWS

FLEXIBLE CONNECTIONS

RUBBER | CHILLED WATER PUMPS / CONDENSER PUMPS | EPDM / NEOPRENE | CONTROL UNITS

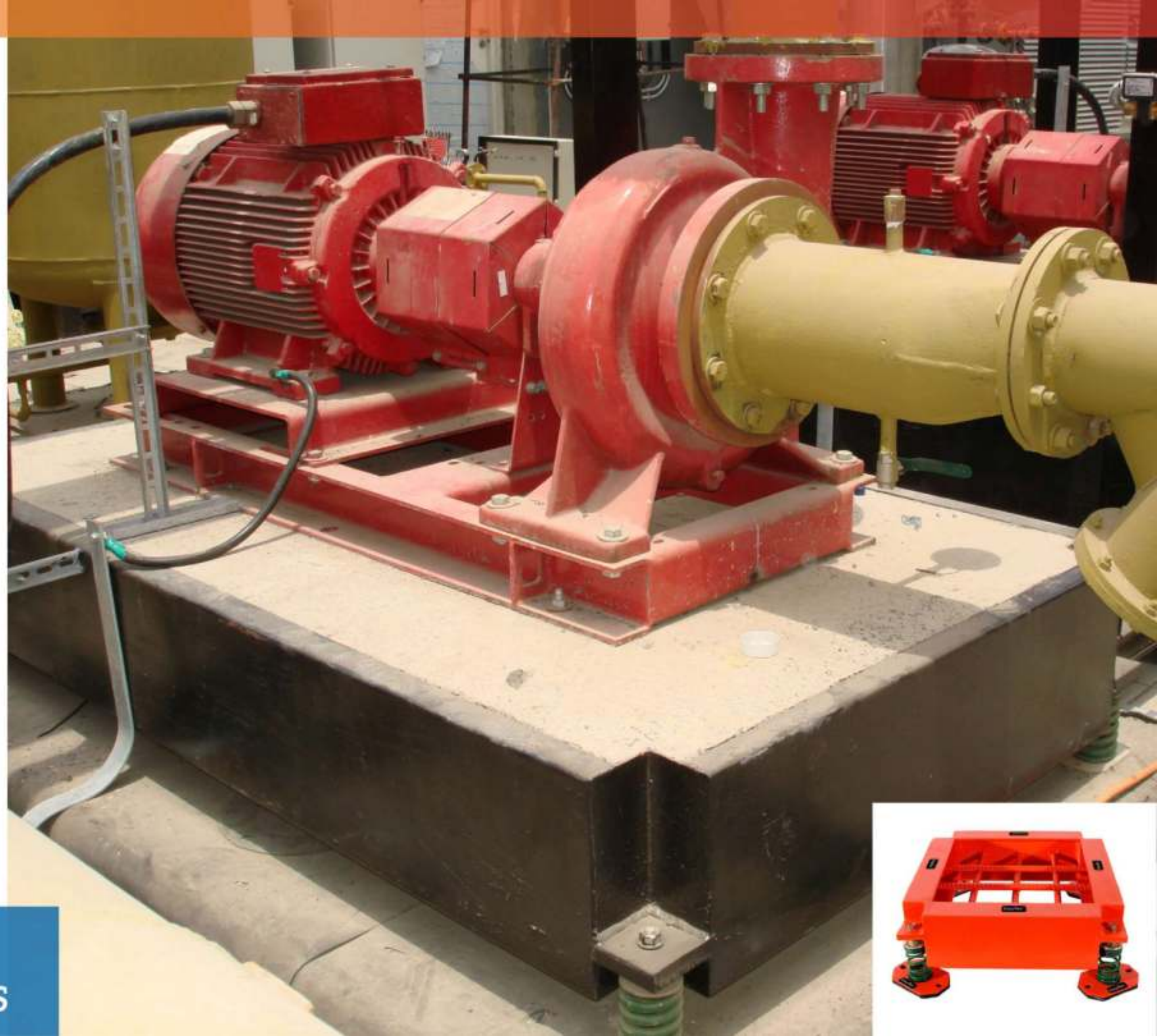
PUMPS

Poured with **Concrete** and supported by **Noise & Vibration Isolators**, **Inertia Base Frames** are floating foundations for **Pumps** and are totally isolated from the structure due to Air Gap.

Easyflex Inertia Base Design Report

- Base Design Dimensions & Weights
- Estimated Deflections
- Vibration Isolation Efficiency Calculation

**VIBRATION ISOLATION
INERTIA BASE | OPEN SPRING MOUNTS**



Building Codes in many areas require components to be capable of resisting forces created during a Seismic Event.

Resilient Snubbers used while installation can limit the motion experienced by equipment and ensure it remains in place.

Easyflex Seismic Snubber series is suitable for 250 Kg to 11500 Kg Point Load.



SEISMIC ISOLATION
SEISMIC SNUBBERS | RESTRAINED ISOLATORS



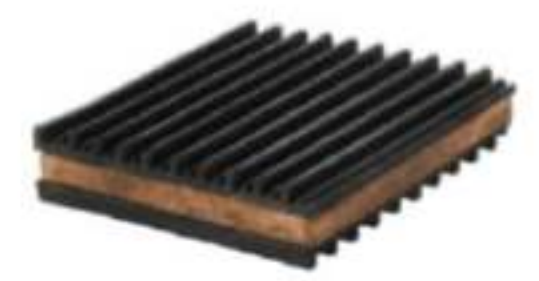
EASY MOUNT



Round Mount



Neoprene Grommet Mount



Cork Sandwich Pad



TURRET MOUNT



Waffle Pad



Ribbed Mounting Pad



Metal Sandwich Pad

AIR HANDLING UNITS

Easyflex-StrutFoot's HD System has been designed to carry large **Air Handling Units**, **Chiller Systems** and other heavy plant loads.

Rooftop Supports for Equipment

- Anti Vibration Rubber Pads attached
- Drilling or penetration of Waterproof Roof membrane is not required
- Made from Recycled Rubber and adds to Carbon Credits for Green Buildings.



VIBRATION ISOLATION

EASYFLEX STRUTFOOT | FLOOR MOUNTED | ROOF TOP EQUIPMENT | SLOTTED CHANNEL & BASE FEET

AIR HANDLING UNITS

Air Duct installation connected with Fans, Blowers and Air Handling Units should be installed with Flexible Canvas connections **to eliminate transfer of noise and vibration throughout the entire ducting.**



- **NFPA Approved**
- **UL Listed Fabrics**
- **Fire Rated & Retardant**
- **Available in 2 Ply and Fibre Glass Insulation**
- **Suitable for Temperature ranges upto 400°C**
- **Customised to Round, Rectangular and Square connectors**



FLEXIBLE CONNECTIONS

FABRIC / FLANGED CONNECTORS | SILICONE / NEOPRENE / ROBG | DOUBLE DUCT CONNECTIONS

AIR HANDLING UNITS

Blowers inside the Air Handling Units require Flexible connectors to **compensate for High Temperatures and movement** occurring inside.

KEY APPLICATIONS

- Fans
- Blowers
- Air Handling Units
- Air Pollution Control Systems



FLEXIBLE CONNECTIONS

FABRIC / FLANGED CONNECTORS | AXIAL / LATERAL MOVEMENT | FIRE RATED & RETARDANT

AIR HANDLING UNITS

Common applications for Rubber Expansion Joints are in **Chilled Water HVAC Systems**.

Piping connected with Pumps, Chillers and Air Handling Units are installed with flexible elements to compensate for Pressure and Temperature changes during operation.



Rubber Expansion Joints are installed at the Inlet and Outlet that compensate for movements in piping systems due to thermal expansion and contraction by absorbing accompanying noise, vibration and water hammer.



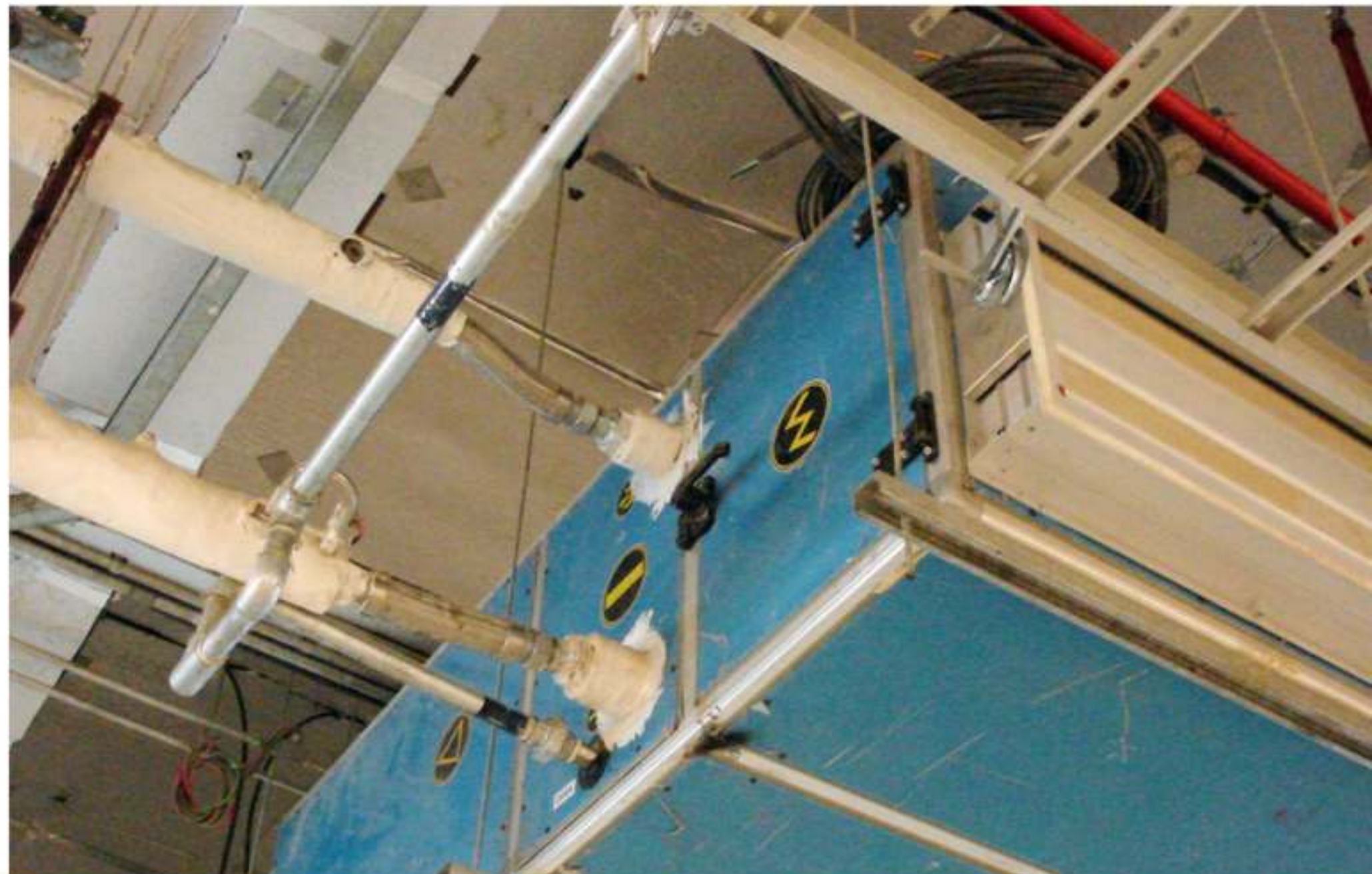
AIR HANDLING UNITS

Braided Hose Connections are flexible joints that are designed to withstand the **Pressure of the System**, enough **Flexibility to compensate for movements** and **misalignment of piping** required by the system.

- Lateral Movement
- Axial Elongation
- Axial Compression



Ceiling suspended Air Handling Units installed with Flexible Braided Hose connections for Chilled water pipes



FLEXIBLE CONNECTIONS

SS CORRUGATED HOSE WITH SS BRAIDING | CUSTOMISED END FITTINGS | AHU / FCU CONNECTOR

AIR HANDLING UNITS

Corrugated Metallic Hoses and SS braids combined with custom end fittings make up for Flexible Connections for

- Air Handling Units
- Fan Coil units
- Pump Connectors
- Steam Generation



FLEXIBLE CONNECTIONS

SS304/316/321 | SINGLE / DOUBLE BRAIDING | MAJOR APPLICATIONS AT DATA CENTERS

AIR HANDLING UNITS / FAN COIL UNITS

Easyflex is OEM Supplier to Greenheck, Edgetech, Zeco Aircon, Flaktwoods, Nicotra and Kruger Ventilation.



Spring and Neoprene combination Hangers



Neoprene Hangers



VIBRATION ISOLATION

CEILING SUSPENDED | AHU / FCU / FANS | AHU WITH HANGERS & SEISMIC BRACING WIRE SYSTEM

AXIAL FLOW FANS



Hangers are available in Spring , Rubber and a combination of both.

Fans, FCU's, AHU's and Chilled water pipes are common applications for these Spring Hangers.



Axial Fans installed with Spring Hangers and Flexible Duct Connectors

VIBRATION ISOLATION

CEILING SUSPENDED | RATED POINT LOAD UP TO 1.25 TON | SS HANGERS FOR TUNNEL VENTILATION

AXIAL FLOW FANS



VIBRATION ISOLATION
FLOOR MOUNTED EQUIPMENT | RESTRAINED / OPEN SPRING MOUNT



VENTILATION FANS



SEISMIC ISOLATION

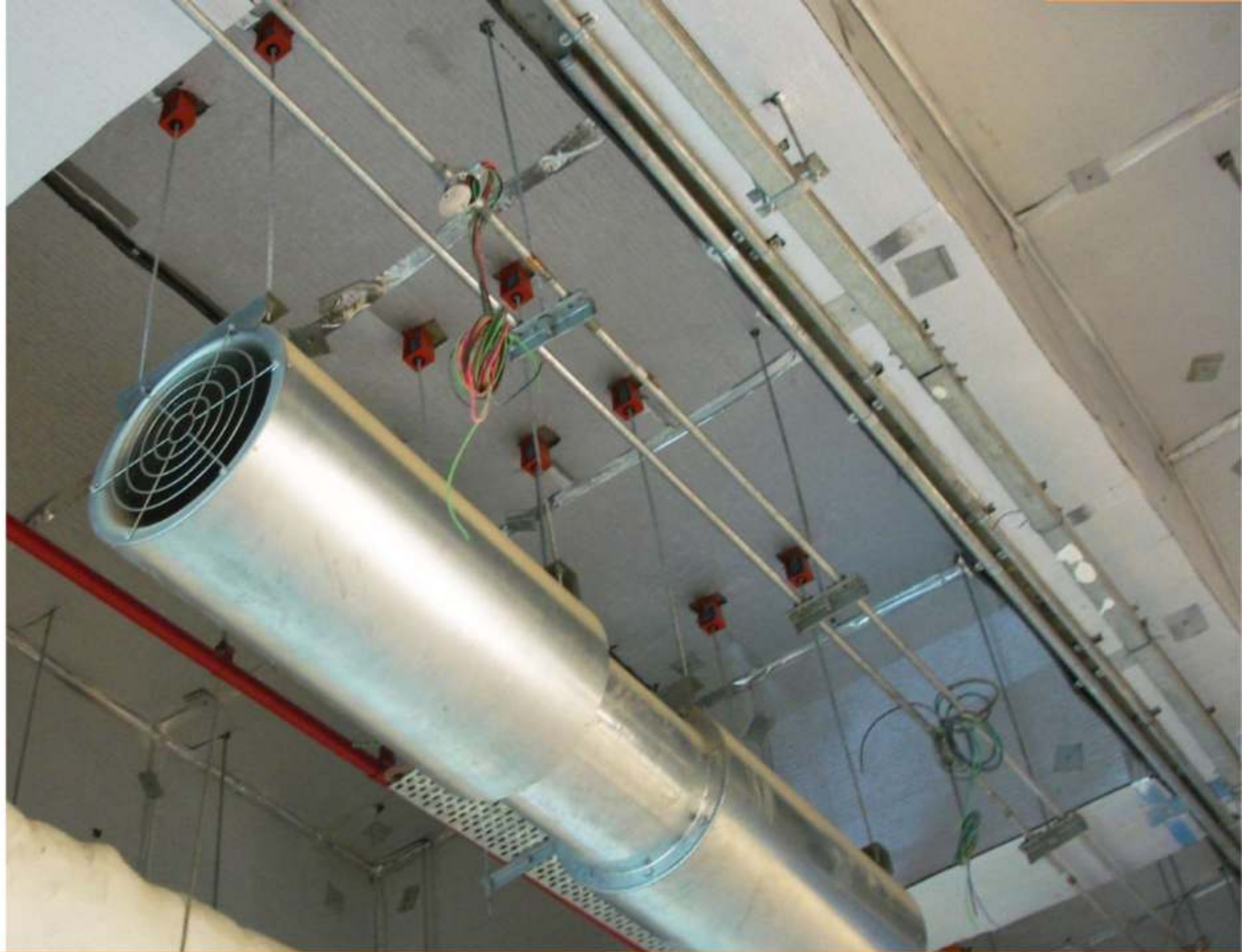
PROJECT : SEAWOODS, NAVI MUMBAI | RESTRAINED SPRING MOUNTS





KEY APPLICATIONS

- AHU / FCU
- Tunnel Ventilation Fans
- Axial Fans
- Jet Fans
- Piping
- Ductwork



JET FANS

SPRING HANGERS

VIBRATION ISOLATION SPECIAL APPLICATIONS



SS Hangers with HDG Spring for Fire Rated Applications and Corrosive Environments



SS Enclosed Spring Isolator



Open Spring Mounts for Marine Applications

VRV / VRF OUTDOOR UNITS



EASYFLEX STRUTFOOT

ANTI VIBRATION FEET | SLOTTED CHANNELS | NO DRILLING / ROOF PENETRATION



VRV / VRF OUTDOOR UNITS

VRV / VRF OUTDOOR UNITS



OUTDOOR UNITS / SOLAR



EASYFLEX STRUTFOOT

RECYCLED RUBBER | PIPEWORK / CABLE TRAYS / OUTDOOR UNITS / SOLAR PANELS

PIPING

U CONNECTORS



With the loops extreme flexibility and low force to move, the loop absorbs the seismic energy and imposes minimal loads on the adjacent pipe hangers, supports or nozzle loads on major equipment.



Unique to the loop is the incredibly low amount of force required to bend its legs, minimizing anchor loads, guiding and installation costs.

FLEXIBLE CONNECTORS

SEISMIC ISOLATION | MOVEMENT IN 6 DIRECTIONS | FOR FIRE PIPING AT BUILDING EXPANSION JOINT

PIPING



The unique “EFSVC” design places the flexible leg at 45 degree angles to the pipe run, even allowing up and down movements.

FLEXIBLE CONNECTORS

SEISMIC ISOLATION | V CONNECTORS | MOVEMENT IN 6 DIRECTIONS

PIPING / DUCTING

Seismic Bracing Systems are designed and engineered to **Brace and Secure Non-Structural Equipment** (Architectural elements, Mechanical and Electrical equipment and supplies and other building furniture and services) within a building or structure **to minimise Earthquake damage** to suspended services.

The Easyflex Seismic Bracing Kit

- **Pre-determined length of wire**
- **Seismic Rod Bracket**
- **Seismic Bracket End**



SEISMIC ISOLATION

WIRE BRACING SYSTEMS | PIPING / DUCTING | ADJUSTABLE LOCK

PIPE SUPPORTS & CLAMPS



Sprinkler Clamp



Plain Split Clamp



Clevis Hanger



EPDM Lined Sprinkler Clamp



EPDM Lined Plain Split Clamp



EPDM Lined Clevis Hanger



EJMA DESIGN REPORT

VERTICAL RISER PIPE ANALYSIS

PIPING STRESS ANALYSIS

FINITE ELEMENT ANALYSIS

EQUIPMENTS

DESIGN & ENGINEERING

**SEISMIC DESIGN &
ENGINEERING**

SHOCK ISOLATION DESIGN

VIBRATION EFFICIENCY REPORT

**VIBRATION TROUBLESHOOTING
& RETROFITTING**

PARTIAL CLIENT LIST

PARTIAL PROJECT LIST

Commercial & Office Buildings	Hospital & Educational	Governments	Metro's & Airport's
<p>Net Magic IT Solution - Bangalore The Indian Film Combine - Maker Maxity - Mumbai Amazon - Hyderabad-Telangana RMZ Infinity Co works - Chennai Brigade Technopolis- World Trade Center - Kochi Wave One - Noida Wave City - Noida Esplanade - Bhubaneshwar NBCC - Kidwai Nagar J.P International Centre - Lucknow South City Mall - Kolkata Tata Brookfield Multiplex - Gurgaon Kalyani Tech Park P) Ltd. - Bangalore Netmagic IT Solutions - Mumbai DAICEC BKC Project - Mumbai Jodhpur Mega Mall - Jodhpur LUMAX CORPORATE OFFICE - Gurgaon</p>	<p>Agartala Govt Medical College -Cancer Hospital - Agartala SRM University - Amaravati- A.P. Benett University - Greater Noida Cancer Hospital - Lucknow National Cancer Institute AIIMS - Jhajjar AIIMS - New Delhi American Embassy School - New Delhi American International School - Chennai Apollo Lavasa Health Corp. Al Shifa Hospital Pvt. Ltd. - Kerala Columbia Asia Hospital (P) Ltd. - Mumbai Crescent Engineering College - Noida Columbia Asia Hospital Ltd. - Mysore Dr.N.G.P. Arts and Science College - Coimbatore Escorts Hospital - Faridabad Gautam Budh University - Greater Noida G K General Hospital - Bhuj</p>	<p>NBCC - Kidwai Nagar High Court - Lucknow Police Bhawan - Lucknow Marine Chemical Davison - Kutch Gujarat State Fertilizer & Chemicals Ltd. - Gujarat Gift City - Ahmedabad Americian Embassy - New Delhi Asian Development Bank - Trivandrum BHEL - Haridwar Bulgarian Embassy - New Delhi CSEB - Korba Canadian High Commission - New Delhi DIAL - Delhi I G Stadium - New Delhi Indian Oil - Panipat ISRO - Shar Khalsa Heritage Project - Punjab National Institute of Biologicals - Noida</p>	<p>Delhi Metro Rail Corporation - Delhi DMRC Phase-I - Delhi DMRC Phase-II - Delhi Hyderabad Metro Rail Corporation - Hyderabad Jaipur Metro Rail Corporation - Jaipur L & T Musarambagh - Hyderabad Mumbai Metro Rail Corporation - Mumbai Chennai Metro Rail Corporation - Chennai Noida Metro Rail Corporation - Noida Bangalore Metro Rail Corporation - Bangalore Rajiv Gandhi International Airport - New Delhi Chaudhary Charan Singh International Airport - Lucknow Kannur International Airport - Kannur Cochin International Airport - Kochi Ahmedabad Intl Airport - Ahmedabad Rajiv Gandhi International Airport - Hyderabad Chenani Nashri Tunnelway Limited - Tamil Nadu Bengaluru International Airport - Bangalore</p>
Industrial & Factories	Hotels	Real Estate Developers	Residentials
<p>Granules India Ltd. - Vishakhapatnam ACC Mokka - Japan Alkem Laboratories - Daman Global Automotive Research Centre (GARC) - Chennai BUILDINGS & FACTORIES IC - Mattanur Swidhinath Commercial Industrial Complex - Bhiwandi MLCP - Gurugram IKG Industrial Building, - Gurgaon Abishek Industries - Gurgaon Aditya Birla Minacs - Aurangabad AFL Pvt. Ltd. - Chandigarh Asian Paints - Greater Noida Ajmer Vidyut Vitran Nigam Ltd. - Rajasthan Apollo Tyres - Bangalore A.G. Clothing Pvt. Ltd. - Chennai Bekaert Industries - Pune Bennet & Coleman - Sahibabad Bharat Heavy Electricals - Gujrat</p>	<p>Accent Hotel Pvt. Ltd. - Chennai City Mart Hotel - Sohna Road Cushman & Wekfield - Mumbai DLF Hotels & Apartments Pvt. Ltd. - Gurgaon Dodla Hotel - Trivandrum Eros Shangri-La Hotel - New Delhi GBU Guest House International - Greater Noida GMR Hotel - Andhra Pradesh Goan Hotels & Club Pvt. Ltd. Highland Hotels - Kochi Hotel West Inn Ltd. - Ahmedabad Hotel Holiday Inn - Delhi Indus Hotel - Dwarka Indus Hotel Pashim Vihar Inorbit Mall - Mumbai ITC Hotels - Bangalore ITC Hotels - Calcutta ITC Parel - Mumbai</p>	<p>HCL IT City - Lucknow Condor One Realty - Gurgaon Lodha Belmondo - Mumbai Lodha World One - Mumbai SuperNova - Noida DLF IT Park-1 - Kolkata Brigade Enterprises Limited - Kochi NBCC - New Delhi</p>	<p>My Home DIVIJA - Hyderabad- Telengana DLF Crest - Gurgaon DLF Cameliyas - Gurgaon HEARTSONG - Gurgaon Vijayashree Layout - Bangalore Jaypee Greens - Greater Noida Vipul Belmonte - Gurgaon Omaxe Forest Spa - Noida</p>

The logo for Easyflex, featuring the word "Easyflex" in white sans-serif font on an orange rectangular background. To the right of the text is a vertical black bar, and further right is a white square containing a black circle with the letters "TM" inside.

Easyflex

TM

- **Flexible Connections**
- **Vibration Isolation**
- **Design & Engineering**

Sumer Singh

+91 9953130201

sumer@easyflex.in

www.easyflex.in

B 168 Phase 2, Noida, India

E 63 Surajpur Site B, Greater Noida, India