



EASYFLEX

ENGINEERING INDIA

INDUSTRY 4.0

MARINE

INDUSTRIAL PLANTS

PETROCHEMICAL

FOOD INDUSTRY

INFRASTRUCTURE

POWER

OIL & GAS

COMMERCIAL CONSTRUCTION

Capital Equipments, Piping and Ducting - related to all such industries are sources of Vibration and Noise.

Easyflex engineers multiple product lines to ensure Safety, efficient operations of overall systems and a benchmark of quality standards for our customers and the People impacted by development in the world at large.

KANWAL INDUSTRIAL CORPORATION

Operating under the Brand Easyflex, is invested in design and manufacturing of

Flexible Piping Components

Vibration & Noise Control Technology

And Technology in

Pipe Thermal Stress Analysis

Shock Isolation Design

Seismic Design & Engineering



Easyflex



VIBRATION ELIMINATION

MANUFACTURING & TESTING

QUALITY ASSURANCE



FLEXIBLE CONNECTIONS

Expansion joints and Bellows are specially designed for industrial and commercial **installations using piping** which requires expansion / contraction or movement joints to deal with thermal expansion, vibration, water hammer or ground movement.



Genset Exhaust Bellows



Universal Bellow



Toroidal Expansion Bellows



Single Arch
Neoprene Joint



Double Arch
Neoprene Joint



Floating Flange
Flexible Joint





SIZE : 1700MM NB

Metallic Expansion Joints & Bellows

Expansion Joint is a **Flexible Bellow Element** made up of a series of **Convolutions**.

Expansion Joints are designed to withstand the **Pressure of the System** with enough **Flexibility to compensate for movements** required by the Piping or Ducting system.

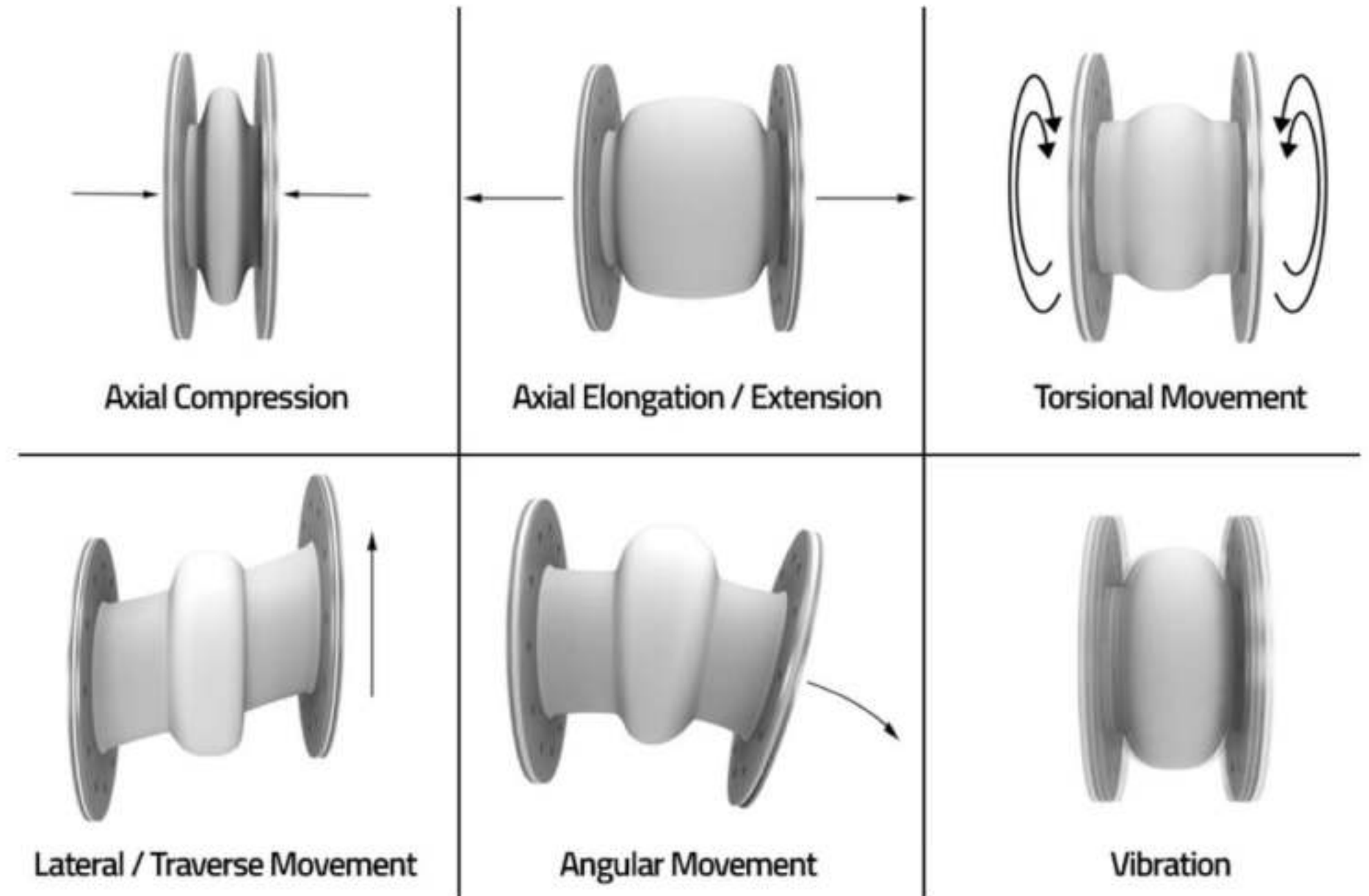
Types of Movements

- Axial Elongation
- Axial Compression
- Angular
- Universal

DESIGN SPECIFICATIONS

- Temperature : **Upto 1000°C**
- Pressure : **Upto PN 100 BAR**
- Sizes : **Upto 3000mm**
- Universal Bellows for Higher movements

MOVEMENT



EXHAUST GAS BELLOWS

Thermal Expansion in Piping & Ducting systems connected to **Mechanical Equipments** cause **Stress and Vibration** in the associated pipe work.

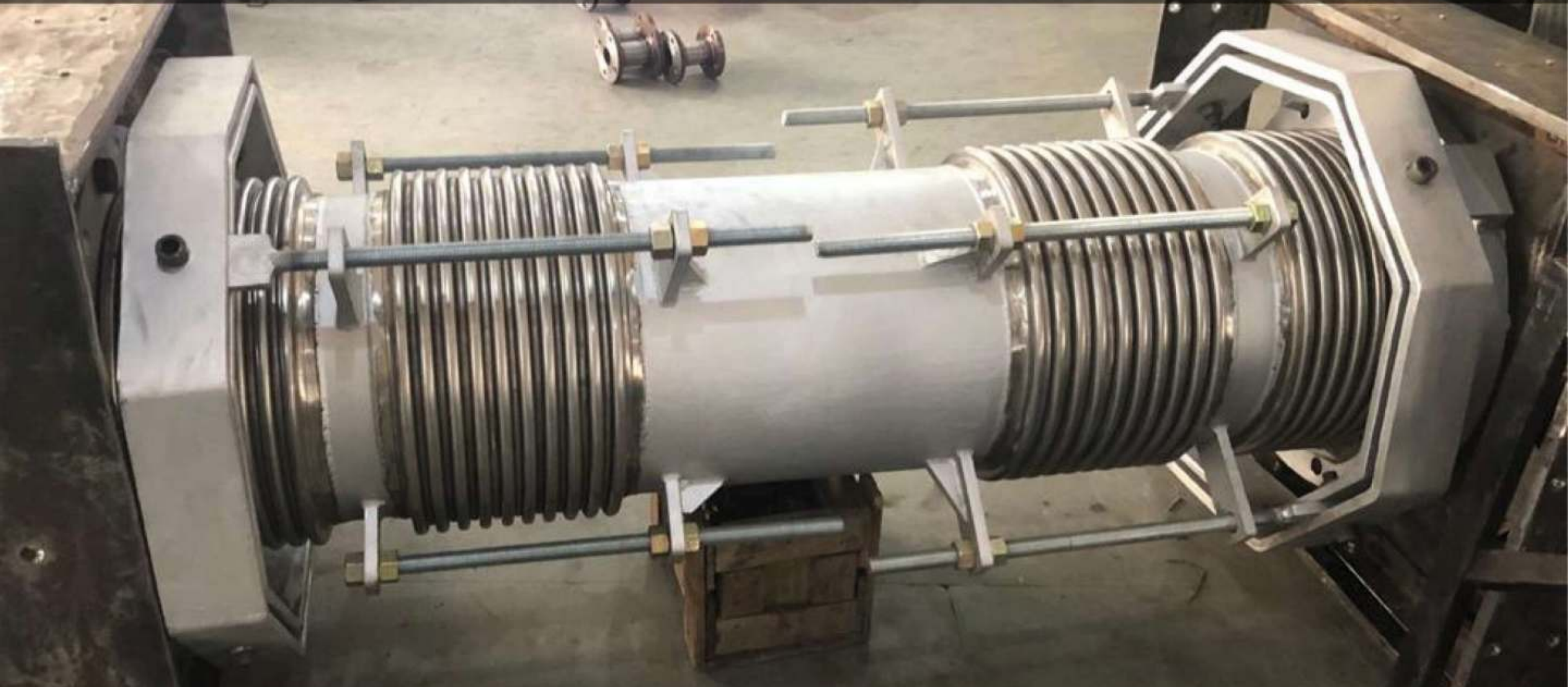
Applications

- **Diesel Generators**
- **Turbines**
- **Exhaust Ducts**
- **Boilers**



SS 304 / SS 321 / SS 316 | INNER SLEEVE REINFORCEMENT

GIMBAL BELLOWS



Size : 300 NB | Designed for 300mm movement in all directions

UNIVERSAL EXPANSION JOINT

**Easyflex Universal
Expansion Joints
for piping
installed with Gas
Turbine at a
Captive Power
Plant of a Sugar
Mill.**



Size : 1200mm NB X 1200mm OAL | SS304 Bellow with Inner Sleeve | Carbon Steel Flanged Ends

HINGED EXPANSION JOINTS



Application : HIGH PRESSURE PIPING SYSTEMS

PUMPS

Expansion Joints & Hoses are installed in Piping Systems connected to

- Pumps
- Chillers
- Generators
- Exhaust systems
- Engines
- Flue Gas Pipelines

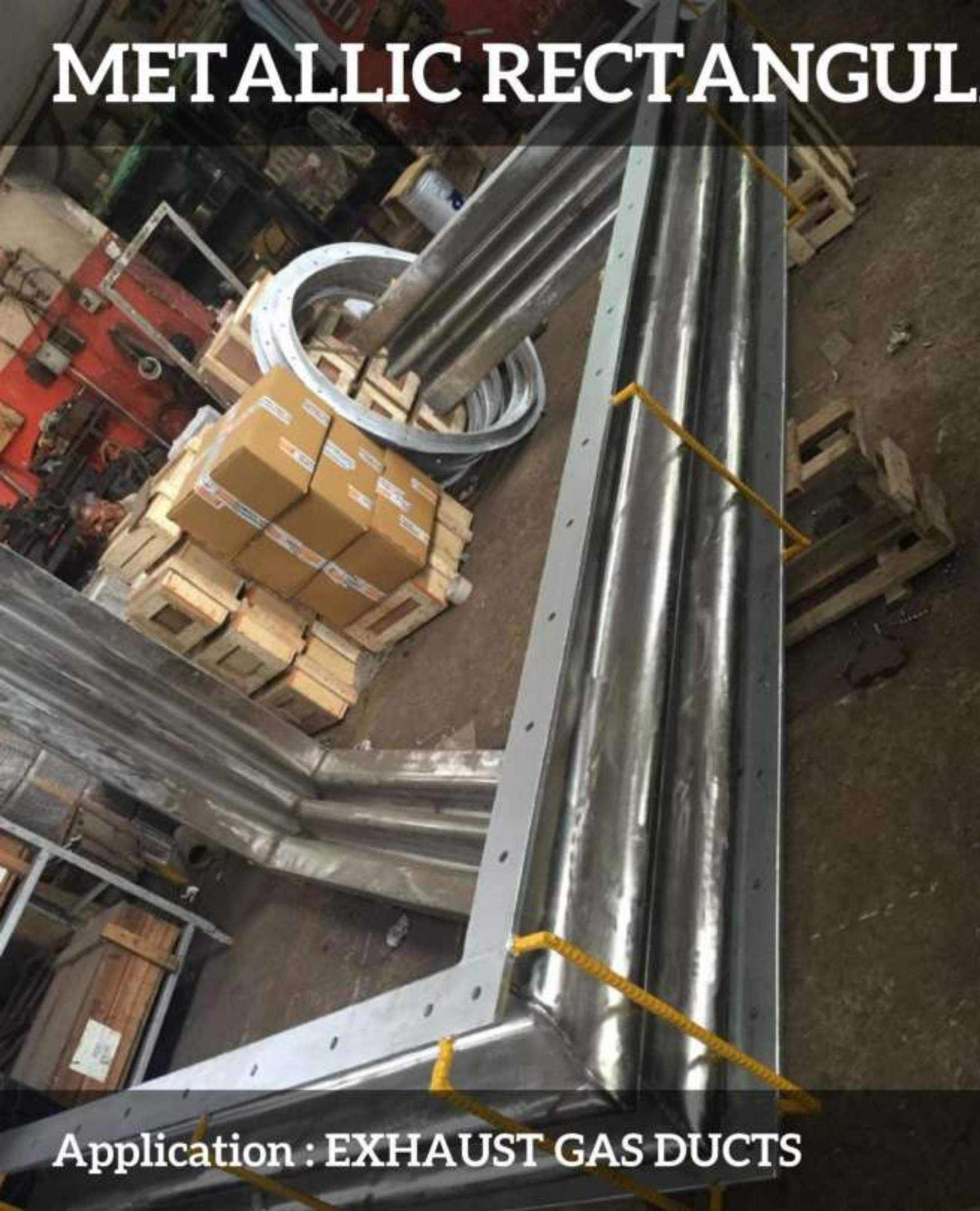
The Selection and Design process of Easyflex Metallic Expansion joints are in compliance with the [Expansion Joints Manufacturer's Association \(EJMA\)](#) and [Fluid Sealing Association \(FSA\)](#).

VIBRATION ISOLATION
EXPANSION JOINTS | SEISMIC ISOLATION



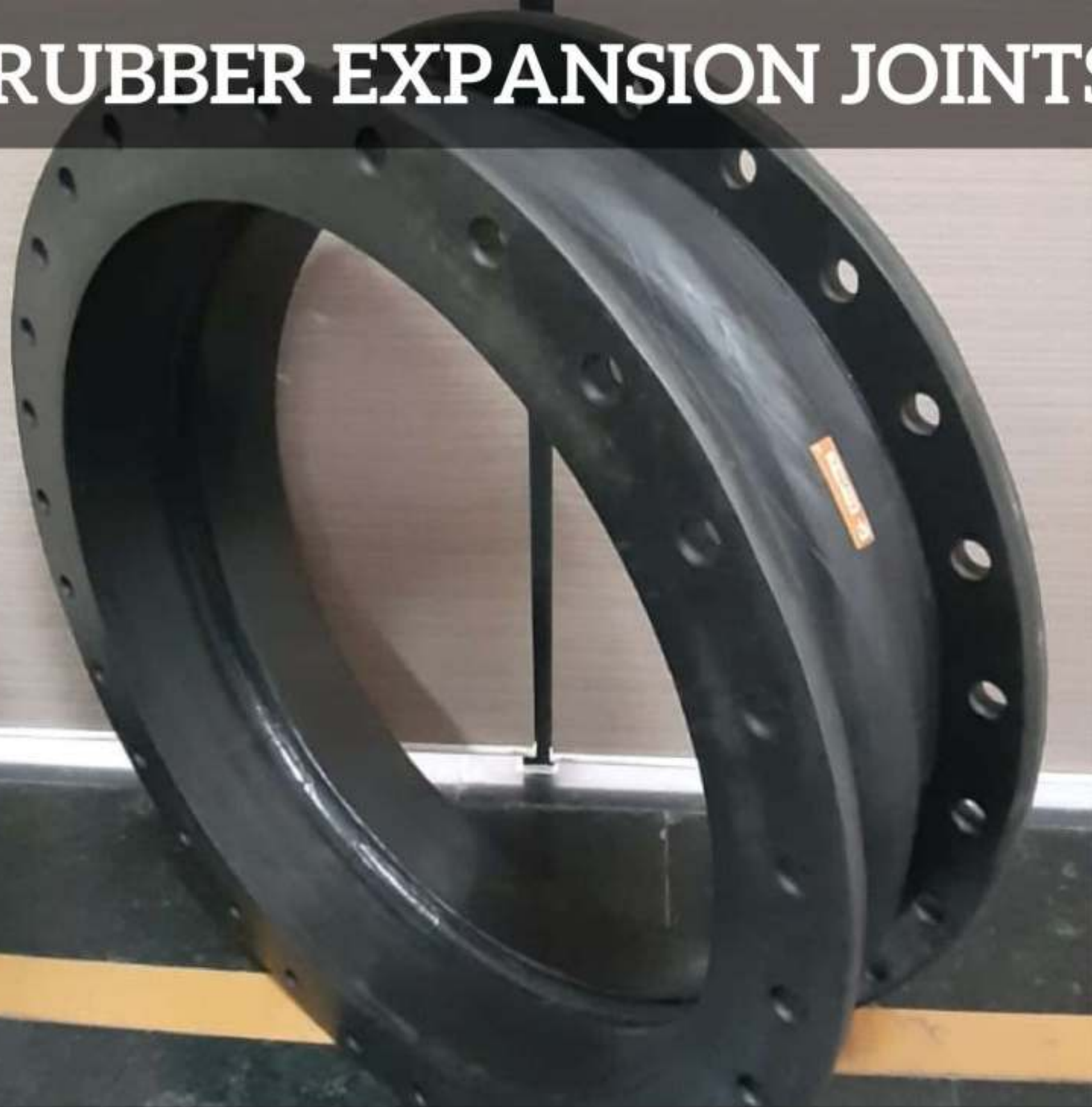
UNIVERSAL TIED BELLOWS FOR PIPE RISERS

METALLIC RECTANGULAR BELLOWS



Application : EXHAUST GAS DUCTS

RUBBER EXPANSION JOINTS



Size : 900 NB | Application : ENERGY PUMPS

RUBBER EXPANSION JOINTS



Application : SLURRY PUMPS | FLOATING FLANGE BELLOWS

PARTIAL CLIENT LIST

The logo for Easyflex, featuring the word "Easyflex" in white sans-serif font on an orange rectangular background. To the right of the orange box is a vertical black bar, and to the right of that is a white square containing a black circle with the letters "TM" inside.

Easyflex

TM

In addition to our Manufacturing capabilities, our Design Engineers at Easyflex are equipped for

- **Pipe Thermal Stress Analysis**
- **Finite Element Analysis**
- **Seismic Design & Engineering**

Sumer Singh
+91 9953130201
sumer@easyflex.in

www.easyflex.in
B 168 Phase 2, Noida, India
E 63 Surajpur Site B, Greater Noida, India